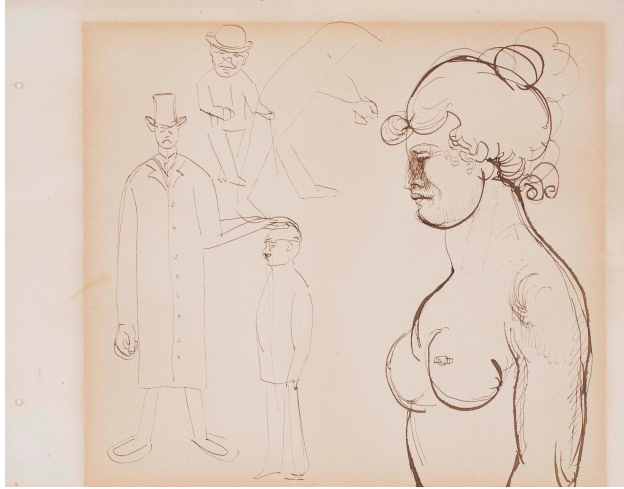


COLNAGHI

Est. 1760



Manolo Hugué

(Barcelona 1872 - 1945 Catalonia)

Studies

1909 - 1914

ink

22.5 x 28.5 cm.;

8 7/8 x 11 1/4 in.

Provenance

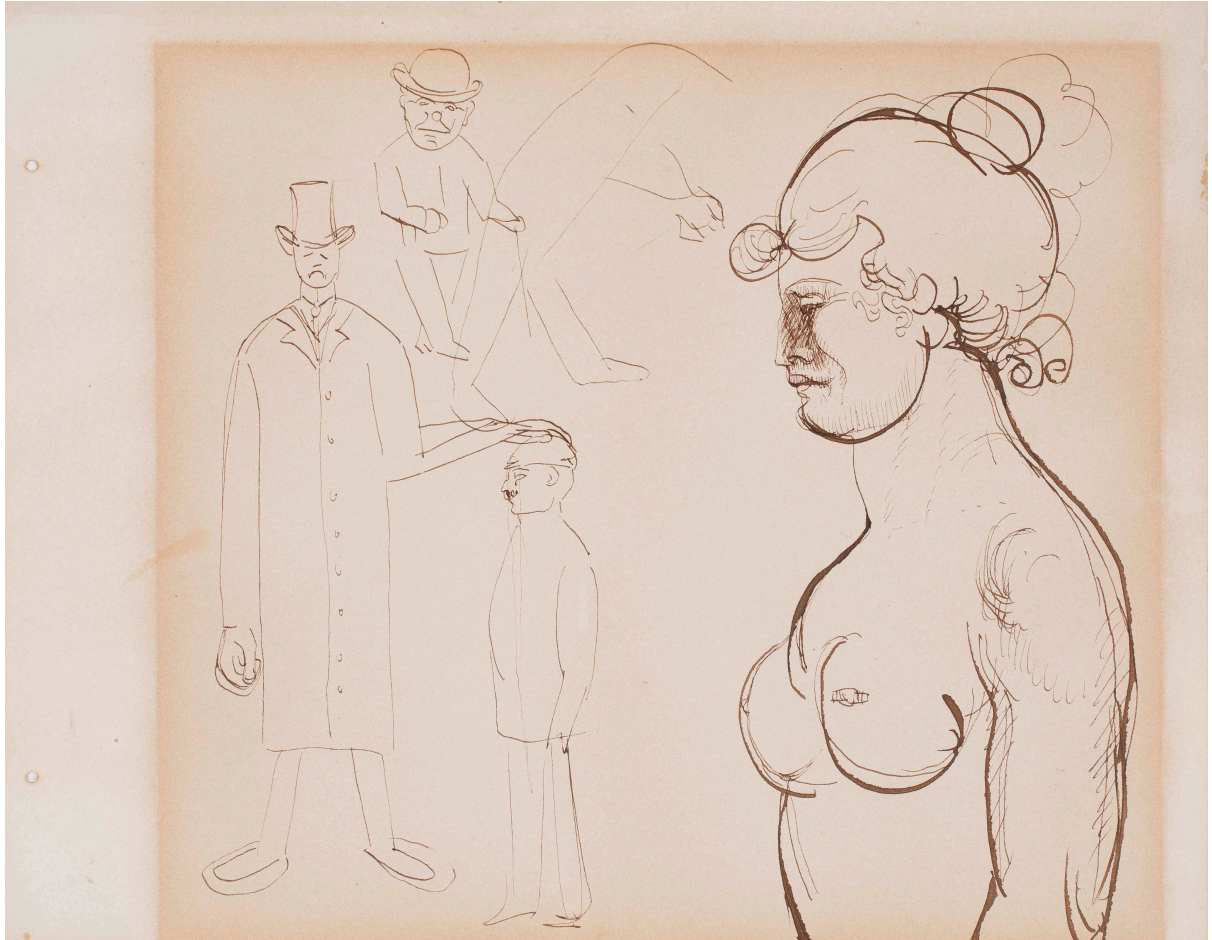
Brunce Collection, Céret, France.

Literature

M. Blanch, *Manolo*, Barcelona 1972, reproduced on p. 249, fig. 579.

COLNAGHI

Est. 1760



LONDON

NEW YORK

MADRID

COLNAGHI

Est. 1760

Manolo Hugué worked in Barcelona at the Masriera i Campins Foundation and in the workshop of the sculptor Eusebi Arnau.

In 1910 he discovered Ceret, where he would live for two periods of his life (1910 - 1914 and 1919 - 1927). Ceret attracted a group of artists known as the 'Group of Ceret' or 'School of Ceret'. There Hugué continued his friendship with Picasso, who he knew from Els Quatre Gats and through Juan Gris, etc.

Hugué was a specialist in reliefs. This is a preparatory drawing, which shows how he studied the human anatomy before making his final works.